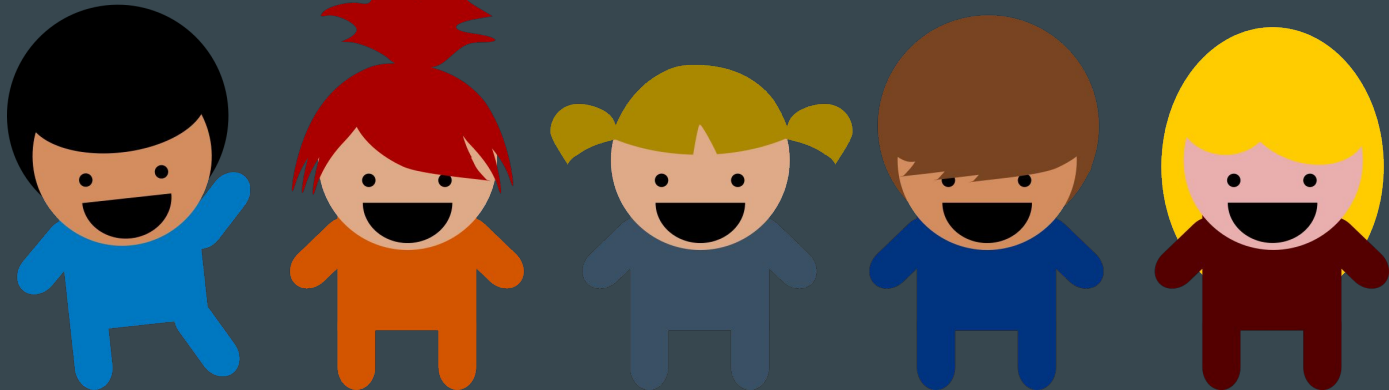


Tecumseh South ELC Back to School Night

September 24, 2018



Kindergarten Reading Curriculum & Assessments

Wit & Wisdom:

Develops higher level thinking, comprehension and writing skills through quality literature and art.

Fountas & Pinnell Phonics:

Phonics program that teaches foundational skills and reading strategies. In Kindergarten, we also use Word Works Daily to support phonics instructions.

Kindergarten Reading Curriculum & Assessments

Assessments:

- Fountas & Pinnell Benchmark Kit (text leveling) - determines reading levels
- NWEA - Adaptive national assessment to assess current skills. Test is given on ipads within the classroom.
- KRA - Kindergarten Readiness Assessment
Assesses the whole child through academic and observational tasks.

IRIP - Individual Reading Instruction Plan

Learners showing a need for support after the above assessments will be given an IRIP. This is an individualized plan to support your child's learning needs.

First Grade Reading Curriculum & Assessments

Wit & Wisdom:

Develops higher level thinking, comprehension and writing skills through quality literature and art.

Fountas & Pinnell Phonics:

Phonics program that teaches foundational skills and reading strategies.

First Grade Reading Curriculum & Assessments

Assessments:

- Fountas & Pinnell Benchmark Kit (text leveling) - determines reading levels
- NWEA - Adaptive national assessment to assess current skills. Test is given on ipads within the classroom.

IRIP - Individual Reading Instruction Plan

Learners showing a need for support after the above assessments will be given an IRIP. This is an individualized plan to support your child's learning needs.

MTSS- District Multi-Tiered System of Supports

Learners receive support for their their learning at Tier I from their classroom facilitator and Tier 2 from Title I Reading staff if the need is in ELA.

Kindergarten Math Curriculum and Assessments

Envision Math is common core aligned with a hands on approach to learning. Our learners work as a whole group, in small groups, as partners, and individually to master the essential skills.

Mobymax helps to customize learning for each individual learner as well. This is done on the computer or an Ipad.

We also integrate educational apps to enforce essential skills. (abc mouse and abcya)

Kindergarten Math Curriculum and Assessments

Assessments:

NWEA- Adaptive national assessment to assess current skills. Test is given on ipads within the classroom.

We use this data to determine each individuals math abilities.

KRA - Kindergarten Readiness Assessment is given at the beginning of the year. Assesses the whole child through academic and observational tasks.

Additional assessments include: observations and daily/monthly monitoring that is recorded on their individual essential skills checklist.

First Grade Math Curriculum & Assessments

Envision Math: This program is aligned to the Common Core State Standards (CCSS). It incorporates hands on learning during whole group, small group, partner and independent work. The Gradual Release Model is used to deliver instruction to all learners (modeling, structured practice, guided practice, independent work).

Moby Max: Learners access this program through a computer or iPad. It is used to customize learning and provide opportunities for reteaching and enrichment.

Math Tools: Math mats, counters, ten frames, unifix cubes, pattern blocks, rulers

First Grade Math Curriculum and Assessments

Assessments:

NWEA-Northwest Evaluation Association-Adaptive national assessment to assess current skills. Test is given on iPads within the classroom. Data is used for grouping learners and provides the opportunity for each learner to work at his/her individual level.

Envision Topic Tests: An assessment is given at the end of each topic to determine which learners have mastered the skills presented and which learners need more practice.

MAPS Classes - PE

Gym class reminders:

- Wear tennis shoes every day
- Please encourage your child to try their best!
- Show your child how to be a good sport!
- 20 minutes of vigorous activity boosts cognitive development!
- Please practice throwing, kicking, and catching skills with your child!

MAPS Classes - Art



Young 5 through 1st grade learners will:

- learn about the elements of art (line, space, shape, form, color, value, pattern and texture).
- learn art history by studying the works of Kandinsky, Van Gogh, Picasso, Matisse and many more.
- learn to discuss what we notice, wonder and feel about art
- Learn to explore, experiment and express ourselves using many mediums of art (drawing, painting, collage, printmaking and sculpture).

MAPS Classes - Music

Music at South ELC is utilizing an online curriculum called Quaver! The link to visit the website is below. Be sure to ask your child about our Musician of the Month each month! Each month we will be talking about a new composer or musician so be sure to ask your child about their music and facts about their lives.

www.quavermusic.org

Essential Skills Checklist

North and South Early Learning Centers use an Essential Skills Checklist to monitor progress throughout the year.

They represent the key skills we want our learners to master before they leave first grade.

We mark “Yes” next to skill once we have evidence of mastery (typically observed more than once)

We use the skills to inform instruction and make decisions about next steps in learning

View our skills [here](#)

BUZZ Online Learning Management System

Essential Skills Checklist will replace the traditional Report Card

- The skills we want our learners to master by the end of first grade
- Focuses on mastery learning
- Connect to the Common Core State Standards

Can log on and access anytime!

- www.tps.k12.mi.us, click on 'parents' tab (right top corner), click on Buzz Portals' then ELC Parent Portal, log in (username: first name.last name & password: password)

[Link to Video Tutorial](#) / [Printable Buzz Login Directions](#)